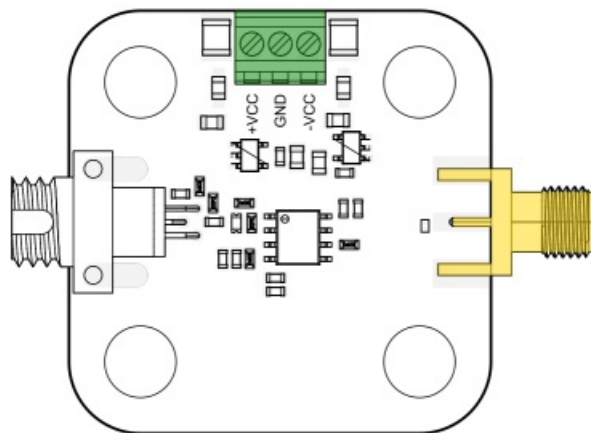


# PD100 - User Guide



## Quickstart



1. Supply +VCC pin with a voltage between 5.5 V and 15 V. Supply -VCC pin with a voltage between -5.5 V and -15 V. The board is regulated to  $\pm 5$  V internally. Using more than  $\pm 6$  V supplies increases power consumption without any significant improvement in supply noise rejection.
2. Supply the photodetector with a maximum 2 mW optical power. The linear output voltage range of the transimpedance amplifier is between -3.5 V and 3.5 V. The corresponding optical power depends on the transimpedance gain and the coupling (AC or DC) of your PD100.
3. The output is available on the SMA connector (50  $\Omega$  impedance).

